

KSF-P spiral compactor

for conveying and dewatering moist and wet materials

KUHN KSF-P spiral compactor

Spiral compactors are used for conveying and subsequent dewatering of solid matter and sludge in many branches of industry.

KUHN KSF-P spiral compactors are available as completely enclosed systems. This prevents dust, moisture and odour emissions. The modular design principle enables the realisation of individual versions and requires extremely low maintenance. Use of high-quality materials ensures a long service life.



Design and function

The spiral compactor is a modular design, ensuring maximum flexibility and enabling rapid and simple adaptation to meet your requirements.

The basic unit consists of a sturdy, shaftless helix made of special or stainless steel which is located in a U-shaped trough and rotates slowly. The profile thicknesses of the conveyor spiral (40 x 20 mm to 100 x 30 mm) are designed for large axial loads. Conveyors of up to approx. 20 m can therefore be realised without an intermediate bearing.

Trough covers, feed hoppers, support structures and other accessories are individually manufactured to suit your needs and requirements.

The input of solid matter is realised via the feed hopper. This can be of an open or enclosed design. The conveyed material is fed through the conveyor spiral into the compaction zone fitted to the end of the spiral conveyor.

The conveyed material is pushed against a pressure valve at the end of the compaction zone. The backlog created by the material seals the valve, and moisture and dissolved dirt is discharged via the openings in the compression cylinder. The pressure water created is intercepted and diverted through the pressure water outlet connection and a discharge hose.

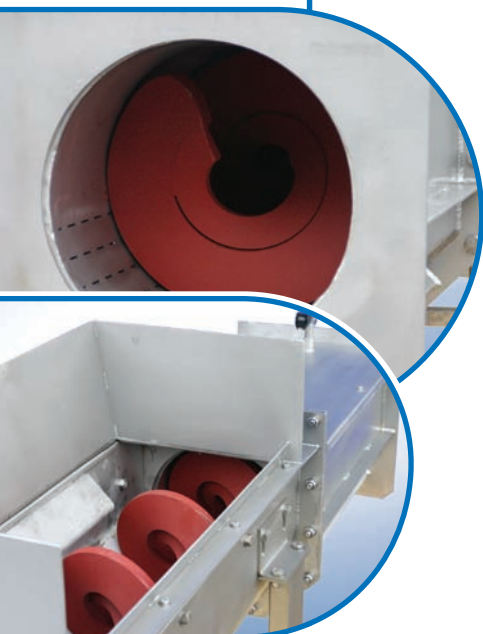
Conveying and dewatering of most varied materials is possible. This opens up a variety of application options:

- Sludge produced by municipal sewage and industry
- Screenings of sewage treatment plants
- Waste from large-scale catering establishments, slaughter houses, etc.
- Cinders
- Conveyed material of varying dimensions (household waste, industrial waste, etc.)
- Raw materials for the food industry
- Recycling material from the lumber and paper industry
- Bulk materials and the most varied types of solid matter

Design (technical features)

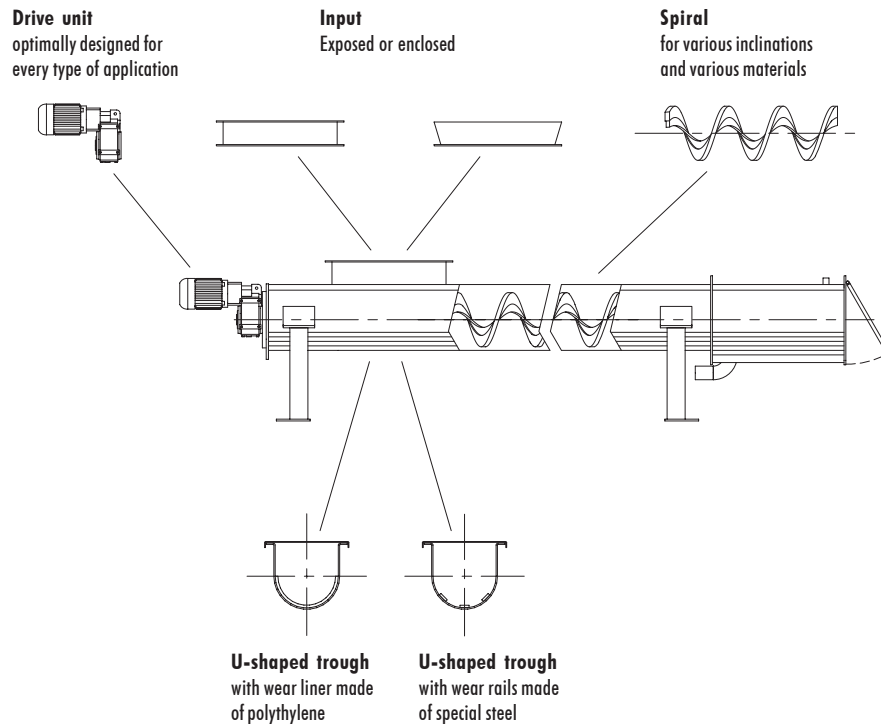
The superior design of our **KUHN** KSF-P spiral compactors ensures optimally ecological, safe and efficient operation and secures your investment in the long-term. Reasons include the following:

- Hygienic protection ensured by enclosed system
- Conveyor lengths up to approx. 20 m can be realised without an intermediate bearing
- Flexible modular design
- Additional functions integrated in the transport path (e.g. washing)
- Maintenance-friendly due to reduced-wear design
- Use of superior and robust materials



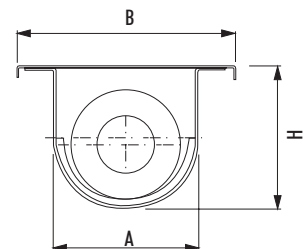
KSF-P spiral compactor

for conveying and dewatering moist and wet materials



	KSF-P 185	KSF-P 240	KSF-P 280	KSF-P 390
A	230	285	325	435
B	315	370	410	530
H	230	290	330	450

All dimensions in mm.
We reserve the right to make technical alterations.



Water for rinsing

connection DN 15 - R1/2"
min. pressure 2,5 bar
quality filtered industrial water
(filter fineness $\leq 150\mu\text{m}$)

Materials

motors/ armatures commercially materials
trough/ covers AISI 304 stainless steel
conveyor screw special steel
Other materials on request.

Drive

index of protection IP55 (explosion protection possible)
motor parallel shaft gear motor
(bevel gear motor optional)