

Great White Center Flow Screen

- ✓ Highest Screening Capture Ratio (SCR)*
- ✓ No screen bypass or carry-over
- ✓ Grid opening options from 0.5 to 25 mm

Excellent membrane or sensitive process protection

All stainless steel fabrication

No submerged sprockets, bearings or bushings

All maintenance above channel

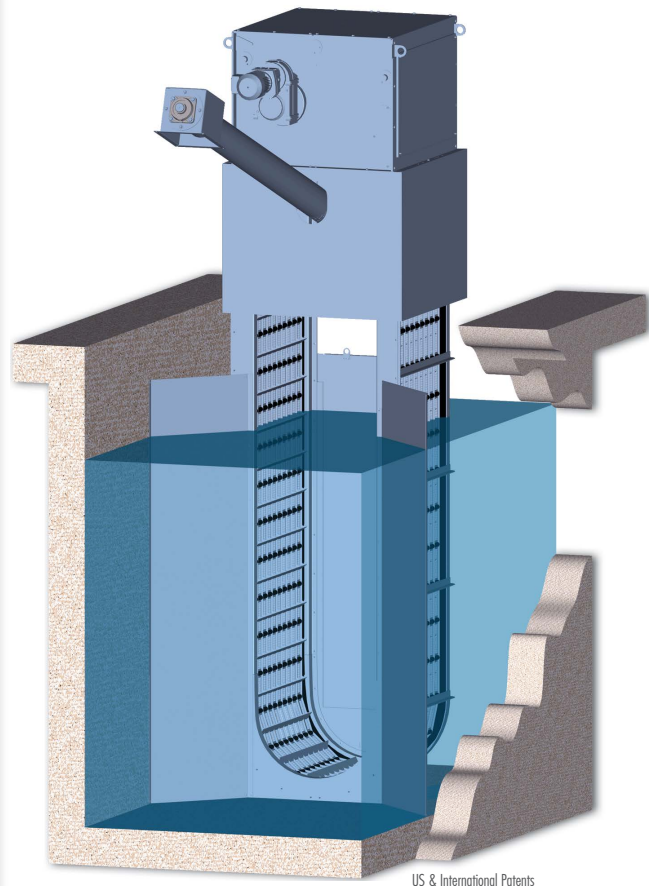
Low friction UHMWPE surfaces reduce wear and operating costs

Totally enclosed for safety, aesthetics, and odor control

Proprietary Great White Bypass Gate eliminates need for additional channel

Patented grid design maintains opening tolerances for life

*Highest SCR (84% for 6mm and 93% for 2mm) of 45 screens independently evaluated



OPTIONAL - Features & Accessories

Center Flow and Dual Flow models

Stainless steel laced links, wire mesh and perforated panel or UHMWPE perforated panel grid openings

T304, T316 and specialty stainless steels

Controls are offered from basic operation to sophisticated automation

Cold weather protection

Dusky Shark Septage Receiving

HYDRO-DYNE
ENGINEERING
www.hydro-dyne.com

PATENTED DRIVE FEATURES

Grid does not touch drive or unloading mechanism

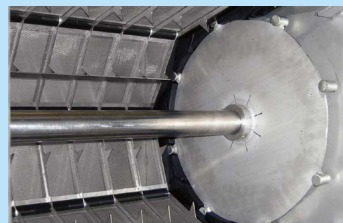
Low friction guide links

Fractional hp requirements

Only two grease fittings per screen

Direct drive uses no chains or sprockets

Electric, hydraulic or explosion proof drives



ADDITIONAL - Compactors & Conveyors

for dewatering and conditioning of screenings

Integral and external models

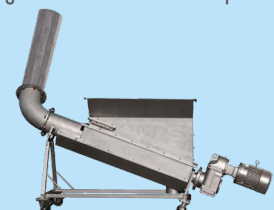
Shafted and shaftless flights

Returns organics and wash water to channel

Collects and conveys screenings for disposal

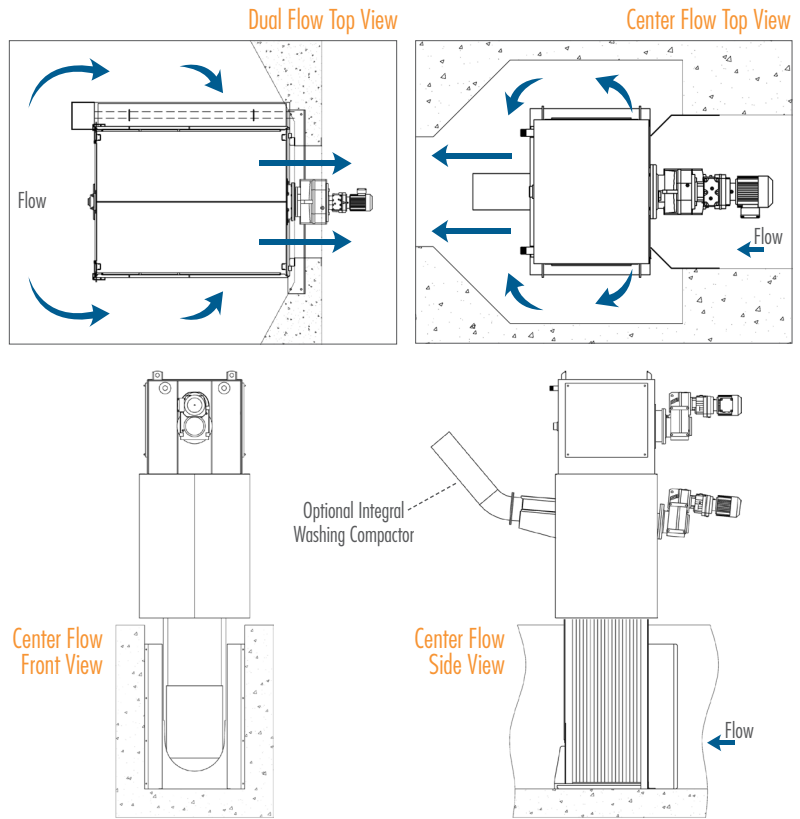
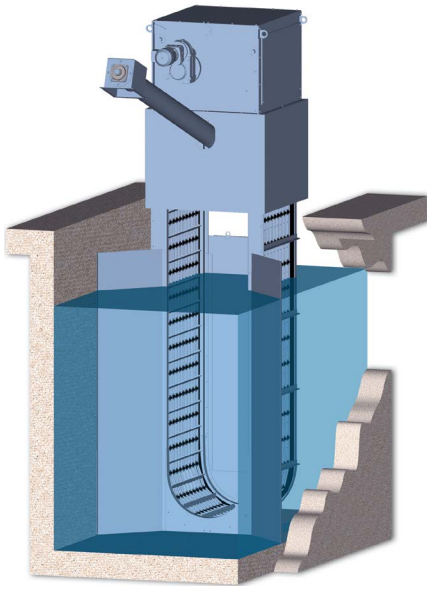
Compactors reduce disposal weight and volume, while bagging units can contain odor

Screenings meet strict landfill requirements



Great White Center Flow Screen

Technical Information



Theory of Operation

High screenings capture rates with low headlosses are easily achieved with the Great White Center Flow Screen's patented design. Flow passes into the screen and is diverted through the grid on each side of the unit. The Center Flow design directs water into the screen and exits out the sides while the Dual Flow design directs water from outside the equipment through the sides for a rear exit. A variety of stainless steel and UHMWPE grid designs separate solids from the stream and lifts screenings out of the channel. As solids are collected on the screen's grid, a mat is formed increasing capture rates and improving the equipment's ability to unload. At the top of the unit a spray wash unloads the solids into a sluice, conveyor or compactor. Any drained wash water is discharged upstream of the screen eliminating bypass, while solids are transported for disposal.

Replaceable stainless steel foot section and wear tracks prevent solids bypass, while screen design eliminates downstream problems caused by carry-over. Unlike traditional screens, all solids with diameters larger than screen opening sizes cannot pass under, through or over screen. Even in the event debris is not unloaded by spray wash, it always remains on the "dirty" side of the screen. Our patented sealing system holds extremely tight tolerances between panels and grid to frame, eliminating bypass of solids and intrusion of abrasive grit. The value of this design was recently tested by an independent national testing facility and was awarded the highest Screening Capture Ratio (SCR) of any bandscreen. Our 6mm screen received a SCR of 84% while our 2mm received 93.25%.

Open Area Percentages of Screen Grid

Legend - Opening Size 0% Blocked 30% Blocked

Stainless Steel Mesh

1 mm		2 mm		3 mm		4 mm		5 mm		6 mm	
48.2%	33.7%	50.7%	35.5%	62.4%	43.7%	65.1%	45.6%	65.9%	46.2%	70.9%	49.6%

Perforated Panels

	1 mm		2 mm		3 mm		4 mm		5 mm		6 mm	
	Stainless Steel	36.0%	25.2%	46.2%	32.3%	50.8%	35.6%	63.0%	44.1%	50.0%	35.0%	58.0%
UHMWPE	2 mm	3 mm	4 mm	5 mm	6 mm	9 mm						
	46.0%	32.2%	57.2%	40.0%	59.5%	41.7%	58.5%	41.0%	63.1%	44.2%	63.7%	44.6%

Stainless Steel Links

1 mm		2 mm		3 mm		4 mm	
54.4%	38.1%	60.0%	42.0%	67.1%	46.9%	71.2%	49.9%
5 mm		6 mm		9 mm		10 mm	
74.0%	51.8%	72.7%	50.9%	77.1%	53.9%	78.0%	54.6%
12 mm		15 mm		20 mm		25 mm	
79.4%	55.6%	79.4%	55.6%	80.0%	56.0%	81.4%	57.0%

4750 118th Avenue North Clearwater, FL 33762 USA

Phone (813) 818-0777 Fax (813) 818-0770

www.hydro-dyne.com